

2 Bedroom Semi-Detached

£145,000



Sprowston, Norwich

Located within the popular suburb of Sprowston, this 2 bedroom semi detached house is well located for local amenities including schools and shops. It also offers a very generous rear garden and off street parking.

- Two Bedrooms
- Shower Room
- Gas Central Heating
- Parking

Entrance door to:

Hallway

Double radiator. Understair cupboard housing boiler. Staircase to first floor. Stained floor boards.

Lounge(19'5" x 11'6")

UPVC double glazed window to front. Double radiator, TV and telephone point. Stained floorboards. Serving archway to kitchen.

Kitchen (13'10" x 7')

Stainless steel sink and drainer. Two double glazed windows to rear garden. Modern base units with roll top work surfaces and tiled splash backs. Built in oven and electric hob. Freestanding washing machine. Under work surface space for fridge. Double radiator.

Bedroom 1 (10' x 10'4")

UPVC double glazed window to rear. Double radiator. Picture rail.

Bedroom 2 (8'2" x 7')

UPVC double glazed window to rear. Double radiator. Picture rail.

Shower Room

Suite comprising WC, wash hand basin vanity unit with storage cupboard under and tiled shower cubicle. Tiled flooring. UPVC double glazed window to rear.

Outside

Paved driveway with off road parking, shrub borders and hedging to front. Gate to rear garden which has established apple and ornamental trees. Storage shed.

Messrs Pure Residential for themselves and for the vendors or lessors of this property whose agents they are give notice that these particulars are produced in good faith, are set out as a general guide only and do not constitute any part of the contract and no person in the employment of Messrs Pure Residential has any authority to make or give any representation or warranty in relation to this property.

01603 618 618

64-66 Westwick Street Norwich, Norfolk, NR2 4SZ
www.pureresidential.co.uk

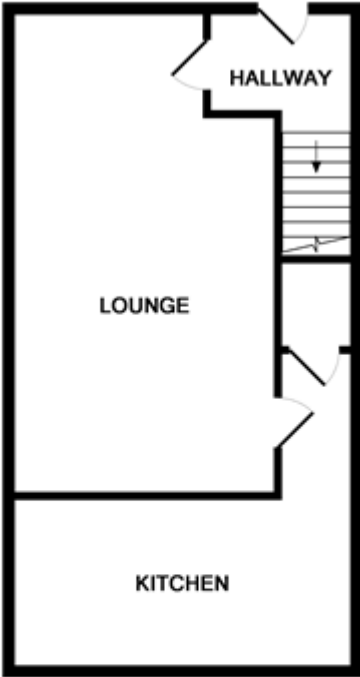
 **pure**residential
professional property sales

01603 618 618

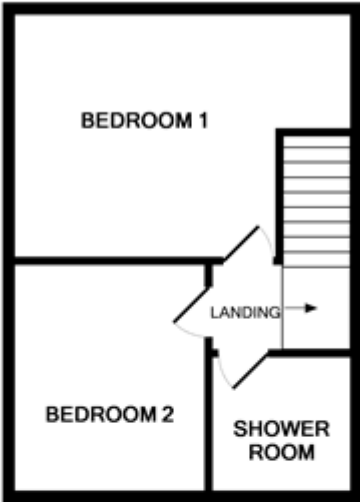
64-66 Westwick Street Norwich, Norfolk, NR2 4SZ
www.pureresidential.co.uk

 **pure**residential
professional property sales

Floor Plan



GROUND FLOOR



1ST FLOOR

Whilst every attempt has been made to ensure the accuracy of the floor plan contained here, measurements of doors, windows, rooms and any other items are approximate and no responsibility is taken for any error, omission, or mis-statement. This plan is for illustrative purposes only and should be used as such by any prospective purchaser. The services, systems and appliances shown have not been tested and no guarantee as to their operability or efficiency can be given
Made with Metropix ©2010